

**ABSTRACT**

Real time Handwritten Character Recognition by using Template Matching is a system which is useful to recognize the character or alphabets in the given text by comparing two images of the alphabet. The objectives of this system prototype are to develop a program for the Optical Character Recognition (OCR) system by using the Template Matching algorithm. Handwritten character recognition is a challenging task in the field of research on image processing, artificial intelligence as well as machine vision since the handwriting varies from person to person. Moreover, the handwriting styles, sizes and its orientation make it even more complex to interpret the text. The numerous applications of handwritten text in reading bank cheques, Zip Code recognition and in removing the problem of handling documents manually has made it necessary to acquire digitally formatted data. This paper presents the recognition of handwritten characters using either a scanned document, or direct acquisition of image using Matlab, followed by the implementation of various other Matlab toolboxes like Image Processing and Neural Network Toolbox to process the scanned or acquired image. Experimental Results are given to present the proposed model in order to recognize handwritten characters accurately.

**Keywords:** Image Rendering, Character Extraction, Image Processing, Edge Detection, Neural Network, Back Propagation Network, Multi Layer Perceptron Network.

**I. INTRODUCTION**

With the advancement of technology, the interfacing between man and machine has increased the scope of research in various domains, thereby making majority of tasks automated and easier to perform. MATLAB is one such powerful machine tool where in the availability of Image Acquisition Toolbox, Image Processing Toolbox and Neural Network Toolbox simplifies the task of obtaining and understanding handwritten text. [2] The two commonly used methods of handwritten character recognition, On-line and Off-line methods, have their own advantages and disadvantages. Where the off-line method provides more accuracy, the on-line method is superior in recognizing characters due to temporal information available to it. [10] Handwriting recognition principally entails optical character recognition (OCR). [9]The OCR systems process the image using several steps including segmentation, feature extraction, and classification. [1]It matches the images against stored bitmaps based on specific fonts. This poses a problem due to the inaccuracy in results of limited patterns available for drawing comparisons. Though, [3] it is possible that both hand written and printed characters may be recognized using OCR, the performance is directly dependent upon the quality of the input documents The presented procedure uses MATLAB's neural network technology to overcome the challenges through analysis of hand strokes, irregularities in written characters and further matching it against multiple stored characters. [7]Other methods which use Euclidean metric distance as a form of measure have been employed earlier using neural network which have proved to be ineffective in later researches. To recognize these characters, the first step is to acquire an image for processing. Next, it is required to use Image Processing toolbox to use various image properties in order to extract characters and later use Neural Network toolbox to train a suitable dataset.

After training the network, testing is done and the performance curve is generated along with the individual required characters. The various steps for performing this task have been illustrated as follows:

- Input image using webcam
- Image rendering

- Character extraction
- Training and testing

## II. INPUT IMAGE USING WEBCAM

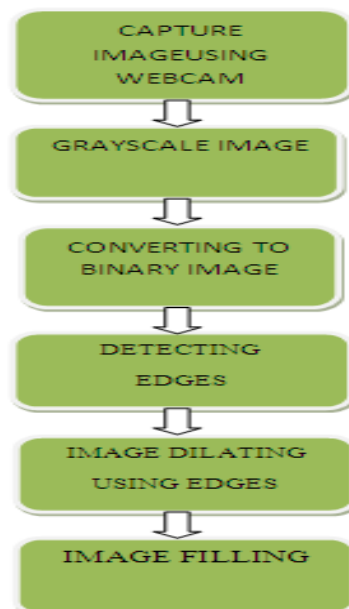
To acquire an image, any one of the two methods can be followed. In the first one, image is capture using webcam in order to make it machine editable. The image can be of any specific format like jpeg, bmp etc. A series of operations are performed after the image is taken as an input. The other method uses Image Acquisition toolbox to take the input image. [11]By opening the tool using Start : Toolboxes More Image Acquisition Tool from Matlab window, one can directly set image acquisition parameter and preview the image acquired. This can later be exported as Image Data to Matlab for further operations.

## III. IMAGE RENDERING

After the image is acquired, Image processing toolbox comes into play. Image is first converted into a grayscale image. The purpose of converting an RGB image into grayscale is due to the fact that it eliminates the hue and saturation information and retains the needed luminance. The grayscale image is further processed into a binary image which replaces all pixels in the input image with luminance greater than level with the value 1 (white) and replaces all other pixels with the value 0 (black). This follows the usage of edge detection to find the edges in the image. [13] It finds the places in the image where there is a rapid change in intensity, by following one of the two given definitions:

Looks for the intensity change at the first derivative, having larger magnitude than some other threshold

Looks for intensity change at second derivative having a zero crossing. It gives a number of derivative estimators, and using these estimators; operational sensitivity related to horizontal edges, vertical edges or even both can be possibly specified. If the edges are found, the binary image is returned with 1's else 0's. After detecting the edges, it is necessary to use morphology for dilating and filling the image which defines the region to fill by selecting the required points.



*Fig1: Block Diagram to represent Image Rendering*

## IV. EXTRACTION

The image is then sent through connectivity test in order to check for the maximum connected components and the properties of each component, which is in the form of a box. After locating the box, the individual characters are then cropped into different sub images that is the raw data for the following feature extraction routine. The size of the sub-images is not fixed since they are exposed to noises which will affect the cropping process to vary from one to another. This will causing the input of the network become non- standard and hence, prohibit

the data from feeding through the network. To avoid this, the sub-images have to be resized and then by finding the average value in each 10 by 10 blocks, the inputs for the network can be determined. By this, extraction of the character is possible and could be passed to another stage for future classification and training purpose of the neural network.

## V. TRAINING AND TESTING NETWORK

Next, we create a training vector for the neural network in order to match the input accepted by the neural network function. The steps performed in creating and training the neural network has been illustrated below: Type `nntool` in Matlab. A dialog box appears where in we are required to Import the Inputs and Targets from the MATLAB workspace. After importing, the created network appears in the network list. Open the network and select training tab. Here, we can choose the training parameters and data (inputs and targets) and finally click on Train option to train the network. I used feed forward back propagation neural network. In other words, [4] implementation based on Multi- Layer Perceptron Network (MLPN) trained with backpropagation was done. [6] Other complex training methods employing Error Back Propagation Algorithm have been used earlier. There were two hidden layers used with TANSIG (tan-sigmoid) function. Further, experimental results in the next section illustrate the steps performed.

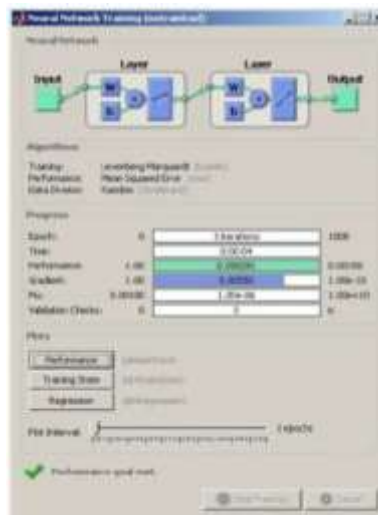
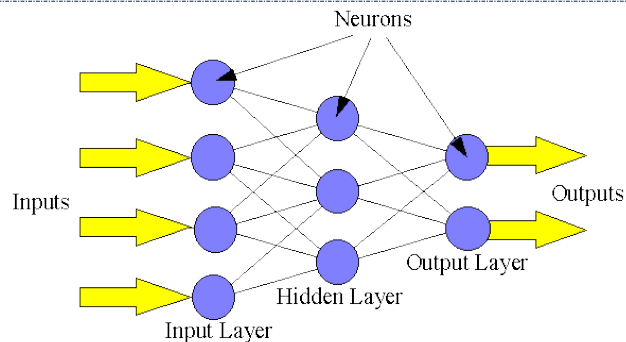


Fig2: Neural network training tool [1]

## VI. NEURAL NETWORK

As the name suggests, Neural is related to neurons, which are an important part of biological nervous system. Like [5] human nervous system processes the information it receives from nerves, in a similar way, this Artificial Network processes information to solve specific problems. Every neural network comprises of interconnected neurons which is trained or configured for a specific application. This is used in various field of study like pattern recognition, data classification and so forth to analysis a problem and adjust its parameters accordingly. The need of neural network can be realized by comparing it with the use of conventional computers which requires an algorithm to solve a specific problem. Unlike computers, neural networks follow parallel processing architecture thereby resulting in maximum efficiency. Moreover, there are multiple network types like Perceptron, feed forward, feedback networks which present a variable ways to associate input with the output. Neural network is not just confined to MATLAB but also suitable for real time systems. It also contributes to research in medicine such as neurology to study brain mechanism in detail. The scope of neural network is not just limited to be used alone. [8] It can be used in solving Zip Code Recognition problem. It can be integrated with other important related subjects like Fuzzy logic and Artificial Intelligence for faster response and computations.



*Fig3: Neural Network Architecture*

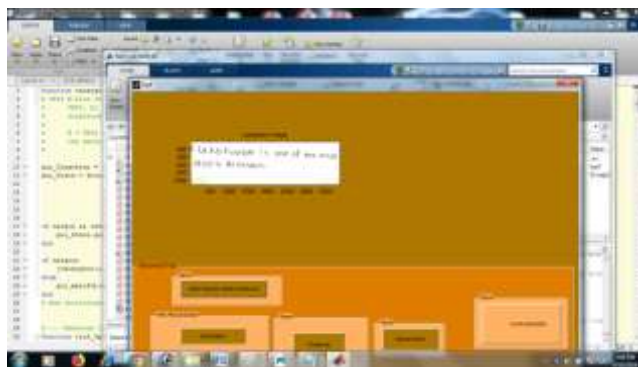
## VII. LITERATURE REVIEW ON HANDWRITTEN CHARACTER RECOGNITION

As per reference, IJETAE Volume 4, Issue 5, May 2014[1] this paper explains comparative analysis between Random Transform and Hough Transform, which are applied for error detection and correction. This paper explains implementation of Handwritten Character Recognition in Matlab, compared with current working method of Handwritten Character Recognition. This system achieved recognition rate near about 92%.

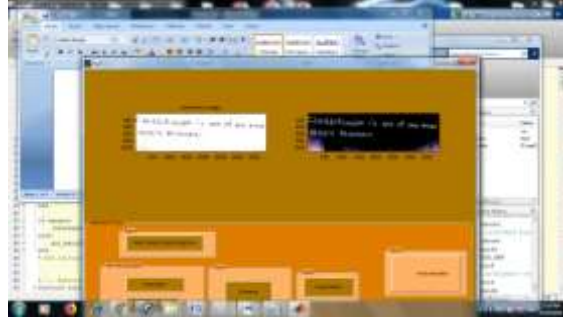
As per reference, IJSR Publications, Volume 2, Issue 6, June 2012 [2] this paper discusses recognition of off-line English character. This explains a new model Hidden Markov Model (HMM) for character recognition. The Novel feature Extraction method is used for implementing HMM. By collecting 13000 samples from 100 writers they have tested performance of Handwritten Character Recognition technique and got accuracy of near about 94%.

As per reference, IJARECE Volume 2, Issue 5, May 2013 [3] this paper implements the Handwritten Character Recognition technique in Matlab. This paper explains how matlab is more convenient and effective for Handwritten Character Recognition technique. The performance of Handwritten Character Recognition has been tested with samples in this approach.

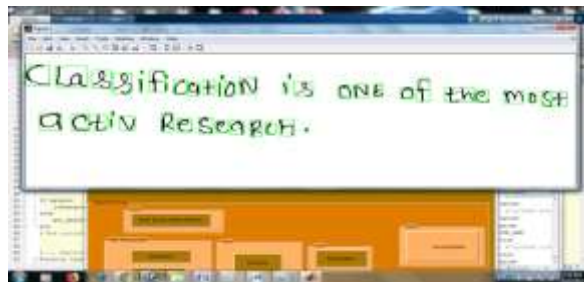
As per reference, European Academic Research, Volume I, Issue 5/ August 2013 [4] this paper discusses the OCR technique with its components. This achieved a good recognition rate by implementing Particle Swarm Optimization Approach.



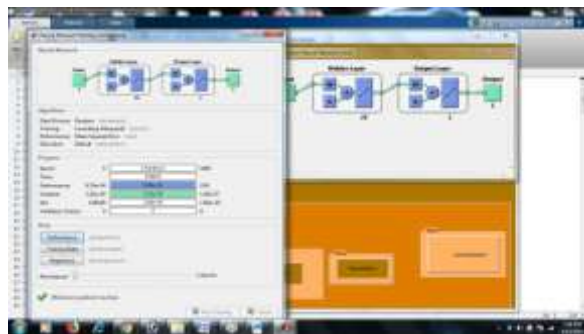
*Fig4:capture image using webcam*



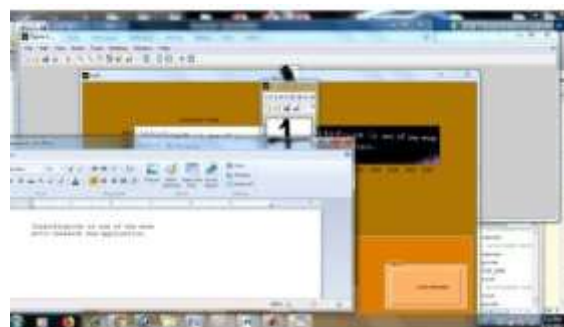
*Fig5: Binary image and thresholding*



*Fig6: Character extraction*



*Fig7: Train Network*



*Fig8: Output*

## VIII. CONCLUSION

As presented in the paper, handwritten character recognition is categorized into three main divisions: Image Acquisition, Image processing and neural network training of the dataset. The experimental results illustrate how an input image leads us to character extraction and further usage of neural network recognizes the handwritten patterns, accordingly. The reason for choosing artificial neural networks as a part of the research to perform character recognition is due to their high noise tolerance. The designed systems have the ability to yield accurate results, provided the correct dataset is available at the time of training the network. The current stage of research depicts that the software does perform well both in terms of speed or accuracy. But the character



location is not efficient since the size of every block varies. This can be taken care of by initializing the weights during training of dataset. There is a scope of improvement the current system. Hence, a simple yet effective approach for recognition of handwritten characters using artificial neural networks has been described

## IX. REFERENCES

- [1] Žiga Zadnik " Handwritten character Recognition: Training a Simple NN for classification using MATLAB"
- [2] Kauleshwar Prasad, Devvrat C. Nigam, Ashima Lokhtiya and Dheeren Umre"Character Recognition Using Matlab's Neural Network Toolbox "International Journal of u- and e- Service, Science and Technology Vol. 6, No. 1, February, 2013
- [3] Sandeep Tiwari, Shivangi Mishra, Priyank Bhatia, Praveen Km. Yadav , "Optical Character Recognition using MATLAB",International Journal of Advanced Research in Electronics and Communication Engineering (IJARECE) Volume 2, Issue 5, May2013
- [4] Mathias Wellner, Jessica Luan, Caleb Sylvester, "Recognition of Handwritten digits using a Neural Network", 2002
- [5] [http://www.doc.ic.ac.uk/~nd/surprise\\_96/journal/vol4/cs11/report.html](http://www.doc.ic.ac.uk/~nd/surprise_96/journal/vol4/cs11/report.html)
- [6] Vijay Patil and Sanjay Shimpi, "Handwritten English character recognition using neural network" , Elixir Comp. Sci. & Engg. 41(2011)
- [7] Sumit Saha,Tanmoy Som," Handwritten character recognition by using Neural-network and Euclidean distance metric " IJCSIC -International Journal of Computer Science and Intelligent Computing Vol. 2, No. 1, November 2010
- [8] O.S. matan , R.K. Kiang,C.E. Stenard," Handwritten Character Recognition Using Neural Network Architectures", 4th USPS technology Conference, November 1990
- [9] A Matlab project in OCR by Jesse Hansen : [www.ele.uri.edu/~hansen/projects/ele585/OCR/OCR.df](http://www.ele.uri.edu/~hansen/projects/ele585/OCR/OCR.df)
- [10] [http://en.wikipedia.org/wiki/Handwriting\\_recognition](http://en.wikipedia.org/wiki/Handwriting_recognition)
- [11] <http://www.mathworks.in/products/imaq/description3.html>
- [12] <http://pages.cs.wisc.edu/~bolo/shipyard/neural/local.html>
- [13] <http://www.mathworks.in/help/images/detect-edges-in-images.html#f11-12512>
- [14] X. Chen and A. L. Yuille, Detecting and reading text in natural scenes, in Proc. IEEE Conf. Comput. Vis. Pattern Recognit., 2004, pp. 366373.
- [15] K. C. Jung, K. I. Kim, and A. K. Jain, Text information extraction in images and video: A survey, Pattern Recognit., vol. 5, pp. 977997, May 2004.
- [16] Sensing Motion with Passive Infrared Sensors. 2016. Available from: <http://www.digikey.com/en/articles/techzone/2012/jun/sensing-motion-with-passive-infrared-pir-sensors>
- [17] Raj KM, Raj MS. Person identification for visually impaired using lab VIEW. Indian Journal of Science and Technologies. 2015 Nov; 8(31):1–4.
- [18] Vashishtha V, Md S. A paper currency recognition system using image processing to improve the reliability with PCA method. International Journal of Engineering Sciences and Research Technologies. 2015 Jun; 4(6):172–5.
- [19] Karen Duarte, Jos'eCec'yllo, Jorge S'a Silva, Pedro Furtado "Information and Assisted Navigation System for Blind People", Proceedings of the 8th International Conference on Sensing Technology, Sep. 2-4, 2014, Liverpool, UK.
- [20] Kwang In Kim, Keechul Jung, and JinHyung Kim "Texture-Based Approach for Text Detection in Images Using Support Vector Machines and Continuously Adaptive Mean Shift Algorithm", IEEE transactions on pattern analysis and machine intelligence, vol. 25, no. 12, december 2003.
- [21] B. Epshtein, E. Ofek, and Y. Wexler, "Detecting text in natural scenes with stroke width transform," IEEE Conf. Computer Vision and Pattern Recognition(CVPR),pp.2963–2970,Jun.2010.

## CITE AN ARTICLE

Gulati, I., Vig, G., & Khare, V. (n.d.). REAL TIME HANDWRITTEN CHARACTER RECOGNITION USING ANN. *INTERNATIONAL JOURNAL OF ENGINEERING SCIENCES & RESEARCH TECHNOLOGY*, 7(4), 357-362.